

2GoTrade



iPhone & Android  
「交易易」手機應用程式簡易指南  
「GoTrade2」 Mobile App User Guide

V1.0 2022



\*使用Intel 處理器的安卓手機可能無法從Google Play Store 中下載。  
\* Android device with Intel CPU may not be able to download from Google Play Store.

# 目錄 Contents

1. 安裝 GoTrade2 Install GoTrade2	3
2. 首次使用 GoTrade2 Using GoTrade2 for the first time	3
3. 登入 Login	4
3.1 登入頁面 Login Page	4
3.2 雙重認證 Two-Factor Authentication	5
3.2.1 短訊方式 SMS	5
3.2.2 生物認證方式 Biometric Authentication	6
3.2.3 軟令牌方式 Soft Token	6
3.3 重設密碼 Reset Password	7
4. 登入首頁 Login Main Page	8
5. 自選股 Watchlists	9
5.1 總覽 Overview	9
5.2 分組管理 Group Management	9
5.3 添加到自選 Add to Optional	10
6. 個股行情 Stock Quotes	11
6.1 總覽 Overview	11
6.2 技術圖表區 Technical Chart Area	12
6.3 輪候隊伍區 Queue Area	12
6.4 相關輪證 Warrants	13
6.5 滬深股通行情 Shanghai and Shenzhen Stock Connect	14
7. 到價提醒 (僅限於港股串流行情計劃) Price Alert (Applicable of the HK Stocks Real-time Quote Plan)	14
7.1 刪除或停用提醒 Delete or disable reminders	15
8. 落單 (一般訂單) Orders (General Orders)	16
8.1 港股交易 HK Stock Trading	16-17
9. 「我的交易」頁面 [My Trade] Page	18
9.1 總覽 Overview	18
9.2 持倉股票 Position	19
9.3 「今日訂單」指令簿 [Today's Order] Order Book	19
9.4 下單記錄 Order Record	20
10. 我的	21
10.1 總覽 Overview ME	21
10.2 幫助中心 Help Centre	22-23
10.3 設定 Setting	24
10.3.1 密碼設定 Password Setting	24
10.3.2 流動設備登記 Mobile Device Registration	25
10.3.3 生物認證 Biometric authentication	25
10.3.4 設備管理 Device Management	26
10.4 推送通知設定 Push Notification Settings	26
10.5 偏好設定 Preferences Setting	26

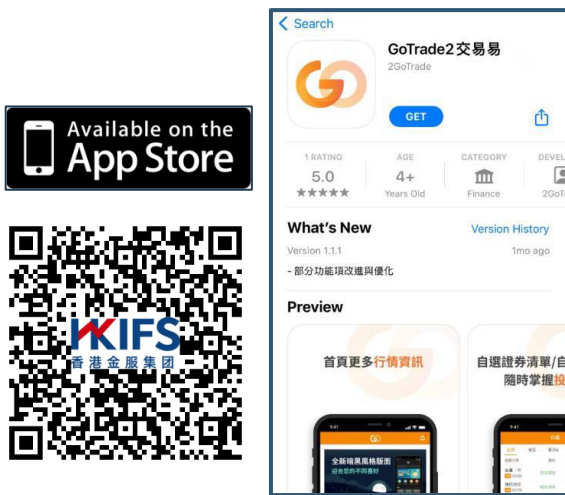
## 免責聲明 Disclaimer

香港國際證券有限公司竭力確保所此手冊提供資訊的準確和可靠度，但不能保證其絕對準確和可靠，且亦不會承擔因任何不準確或遺漏而引起的任何損失或損害的責任（不管是否侵權法下的責任或合約責任又或其他責任）。

Hong Kong International Securities Limited effort is made to ensure the accuracy and reliability of the information provided in this manual, but it cannot be guaranteed to be absolutely accurate and reliable and will not be liable for any loss or damage (whether in tort or not) arising from any inaccuracies or omissions or contractual or otherwise).

## 1. 安裝 GoTrade2 Install GoTrade2

1. 在流動裝置開啓蘋果AppStore或Google Play商店  
Open Apple AppStore or Google Play Store on your mobile device
2. 輸入「GoTrade2」或「交易易」作搜尋，或開啓QR code掃描程式掃描下方的QR Code，即可找到「GoTrade2交易易」的安裝頁，開發商為2GoTrade。  
Enter "GoTrade2" or "Trade" for search, or open the QR code scanner to scan the QR Code as below, and you're done. Find the installation page of "GoTrade2 Trading", the developer is 2GoTrade.
3. 按 <安裝> 。 Press <Install>
4. 完成後按 <開啓> 啓用。 Press <On> to enable when finished.


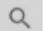


## 2. 首次使用GoTrade2 Using GoTrade2 for the first time

首次使用必須先選擇券商，流程如下：  
You must select a broker when you first time to use . The process is as follows:

1. 在以下頁面點選 <請選擇券商>  
Click <Please select a broker> on the following page



2. 於搜尋處輸入券商名稱並按   
Enter the broker's name in the search box and click 



3. 點選搜尋結果，即可顯示該券商的登入頁面。  
Click on the search result to display the broker's login page.

## 3. 登入 Login

### 3.1 登入頁面 Login Page

HKICS  
香港金服集團

香港國際證券有限公司  
返回首頁

登錄賬戶

登錄密碼

我已閱讀並同意《免責聲明》 [忘記密碼](#)

登錄

快速登錄

版本號碼: 1.1.6 服務熱線: 852-28538038

#### 本公司標誌 Company Logo

若選取錯誤券商，請按標誌下方 <返回首頁>，重覆第2部分流程

If the broker is selected incorrect, please click <Back to Home> below the logo and repeat the process in Part 2.

#### 輸入登入帳戶和密碼 Input ID and Password

顯示已輸入密碼 Show entered password

註：若多次輸入錯誤密碼，系統將會鎖上閣下賬戶，請聯絡本公司客戶服務部

Note: If you enter the wrong password many times, the system will lock your account, please contact our customer services department.

可按 <免責聲明> 以閱讀聲明，並勾選空格  同意聲明。

Click <Disclaimer> to read the statement and tick the space  to agree.

按<登錄>進行雙重認證。若有需要，請按 <忘記密碼> 以重設

Press <Login> for two-factor authentication. If necessary, please click <Forgot Password> to reset

#### 快速登錄 | 雙重認證工具

#### Quick Login | Two-factor Authentication Tool

綁定手機並完成登記後（參考10.3.3部分）可見下列圖示：

After binding the mobile phone and completing the registration (refer to Section 10.3.3), the following icons as below:

生物認證：視乎流動裝置，可以指紋或面容識別完成雙重認證。

Biometric Authentication: Depending on the mobile device, two-factor authentication can be done with fingerprint or face recognition.

軟令牌：生成六位數編碼，供網頁版交易平台 (Go.Portal) 作雙重認證

Soft Token: Generate a six-digit code for two-factor authentication on the web-based trading platform (Go.Portal)

## 3.2 雙重認證 Two-Factor Authentication

### 3.2.1 短訊方式 SMS

系統把單次有效密碼（OTP）發送到閣下於本公司開戶時提供的默認手提電話號碼作為驗證碼。  
The system sends the One Time Password (OTP) to the default mobile phone number you provided when opening the account with our company as a verification code.

- 請核對前四位英文字母（如紅色箭咀示），並在驗證碼欄輸入六位數字單次密碼（如藍色箭咀示），並按 <確定> 完成認證。  
Please check the first four English letters (as indicated by the red arrow), and enter the six-digit one-time password (as indicated by the blue arrow) in the verification code field, and press <OK> to complete the authentication.
- 每個單次密碼只於600秒內有效，逾時未輸入請按 <重新發送> 獲得另一個單次有效密碼。  
Each one-time password is only valid for 600 seconds. If you do not enter it after the timeout, please press <Resend> to obtain another one-time valid password.
- 若閣下開戶時提供多個手提電話號碼，可於倒數完成後按 <切換發送> 選取另一號碼獲取單次有效密碼。  
If you provide multiple mobile phone numbers when opening the account, you can press <Switch Send> after the countdown to select another number to obtain a one-time valid password.
- 完成雙重認證後，可進入首頁（參考第4部分，系統會在通知欄彈出登入成功訊息。（如下圖）  
After completing two-factor authentication, you can enter the home page (refer to Section 4, the system will pop up a successful login message in the notification bar. (as shown below)



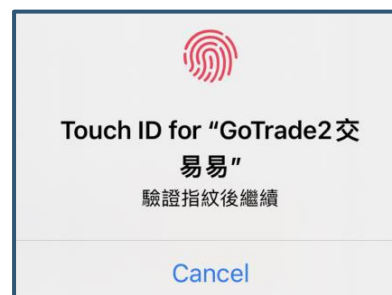
註：

- 閣下若首次使用本程式，雙重認證必需以短訊方式完成。登入成功後可在「設定」部分登記流動裝置及以其他方式作雙重認證（請參考第10.3.2部分）。  
Note: If you are using this program for the first time, two-factor authentication must be completed by SMS. After successful login, you can register your mobile device in the "Settings" section and perform two-factor authentication in other ways (please refer to Section 10.3.2).
- 若登入成功後程式閒置過久，程式會自動登出。請跟隨第3.1部分重新登入。  
If the program is idle for a long time after successful login, the program will automatically log out. Please follow section 3.1 re-login.

### 3.2.2 生物認證方式 Biometric Authentication

用戶在成功登記流動設備（參考10.3.2部分）及啓動生物認證後（參考10.3.3部分），可在下次登入交易易時使用生物方式進行雙重認證。生物認證方式視乎流動設備機能，支持指紋或面容識別。兩者操作方式相同，此處以指紋作示範。


After successfully registering the mobile device (refer to Section 10.3.2) and activating biometric authentication (refer to Section 10.3.3), the user can use the biometric method for two-factor authentication at the next login transaction.

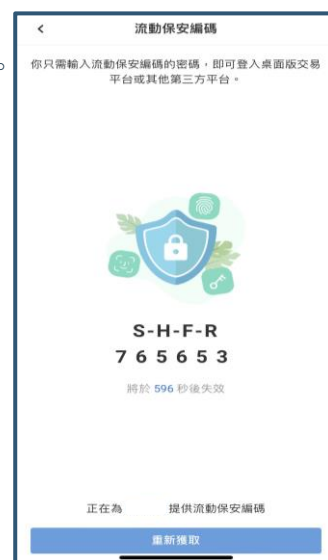


- 登入頁面點按  圖標 On the login page, tap the icon
- 彈出視窗時，請用已在流動設備認證的指頭觸控指紋感應處。成功後自動跳轉到首面。  
When the window pops up, touch the fingerprint sensor with the finger that has been authenticated on the mobile device. Automatically jump to the first page after success.
- 有需要按 <取消> 退出。Press <Cancel> to exit if necessary.

### 3.2.3 軟令牌方式 Soft Token

用戶使用瀏覽器版本的網上交易平台（稱為「Go.Portal」）時，可以交易易手機程式的軟令牌（soft token）生成單次有效密碼，在Go.Portal的對應介面輸入。When users use the browser version of the online trading platform (called "Go.Portal"), they can trade the soft token of the mobile phone program to generate a one-time valid password and enter it in the corresponding interface of Go.Portal.

- 登入頁面點按  圖標 On the login page, tap the icon
- 介面自動生成單次有效密碼（OTP）（如右圖）。  
The interface automatically generates a One Time Password (OTP) (as shown on the right).
- 請核對Go.Portal雙重登入畫面的單次密碼輸入欄前四位英文字母並輸入六位數字單次密碼。  
Please check the first four English letters in the one-time password input field on the Go.Portal dual login screen, and enter the six-digit one-time password.
- 並按 <確定> 完成認證 Press <OK> to complete the authentication





### 3.3 重設密碼 Reset Password

1. 請輸入登入賬號、選取驗證方法（手機號碼 / 電郵）

Please enter the login account and select the verification method (mobile number/email)

2. 輸入閣下開戶時提供的手機號碼或電郵地址。

Enter the mobile phone number or email address you provided when opening the account.

3. 按 <確定>。Press <OK>.



4. 按著圖中紅格按鈕並向右拖曳，以完成拼圖。

Press the red button in the picture and drag to the right to complete the puzzle.



5. 系統發送單次有效密碼（OTP）短訊作為驗證碼。請核對前四位英文字母並在驗證碼欄輸入六位數字單次密碼。

The system sends a One Time Password (OTP) SMS as the verification code. Please check the first four English letters and enter the six-digit one-time password in the verification code field.

6. 於設置新密碼區域輸入新密碼兩次以完成重設。系統會自動檢查密碼強度（三條件均符合而變成綠色）

Enter the new password twice in the Set New Password field to complete the reset. The system will automatically check the password strength (it turns green when all three conditions are met)

- ✕ 清除已輸入資料 Clear entered data
- 👁️ 顯示已輸入密碼 Show entered password

7. 按 <提交> 完成重設，跳轉到登入版面。

Press <Submit> to complete the reset and jump to the login page.



## 4. 登入首頁 Login Main Page

成功登入後跳轉到首頁。Change to the home page after successful login.



系統訊息 System messages (總是顯示 Always shown):  
按入以查看各種系統通知; 新通知圖標右上方將現紅點。  
Press to view various system; a red dot will appear in the upper right of the new notification icon.

常用功能: 一鍵進入下單 / 入金 / 下單記錄 / 新股認購頁面  
Common functions: One-Click access to the order/Deposit/Order Record/New Stock Subscription Page

港股指數: 視乎閣下的港股行情計劃, 顯示實時 / 延時或不顯示港股指數。向左右滑動以查看更多指數。  
Hong Kong Stock Index: Depending on your Hong Kong stock market plan, the Hong Kong stock index will be displayed in real time/delayed or not. Swipe left or right to see more indices.

20大區域: 顯示港股及窩輪 / 牛熊證20大成交額 / 升幅 / 跌幅排名。請看下頁。  
Top 20 Areas: Display the top 20 turnover/increase/decrease rankings of Hong Kong stocks and warrants/CBBCs. See next page.

四大主頁 Four main pages (總是顯示 Always shown):

- 回到此首頁 Home
- 自選股票面 Watchlist
- 落單頁面 Trade (第8部分 sections 8)
- 帳戶資訊及設定 (第10部分) Account Information and Settings (Section 10)

20大排名區 (港股及牛熊 / 窩輪適用)

Top 20 ranking areas (Applicable to HK Stock and CBBC/Warrants)

- 按 立即更新 獲取更新資訊。Press for updated information.
- 按 跳轉不同排名。  
Press to jump to different rankings.
- 點選所需證券, 查看個股行情。  
Click on the desired security to view individual stock quotes
- 按排名區底部的  $\vee$  /  $\wedge$  箭咀以展開20大排名, 或收回到顯示5大。  
Press the  $\vee$  /  $\wedge$  arrow at the bottom of the ranking area to expand the top 20 rankings, or retract to display the top 5.

### 互動功能 Interactive Function

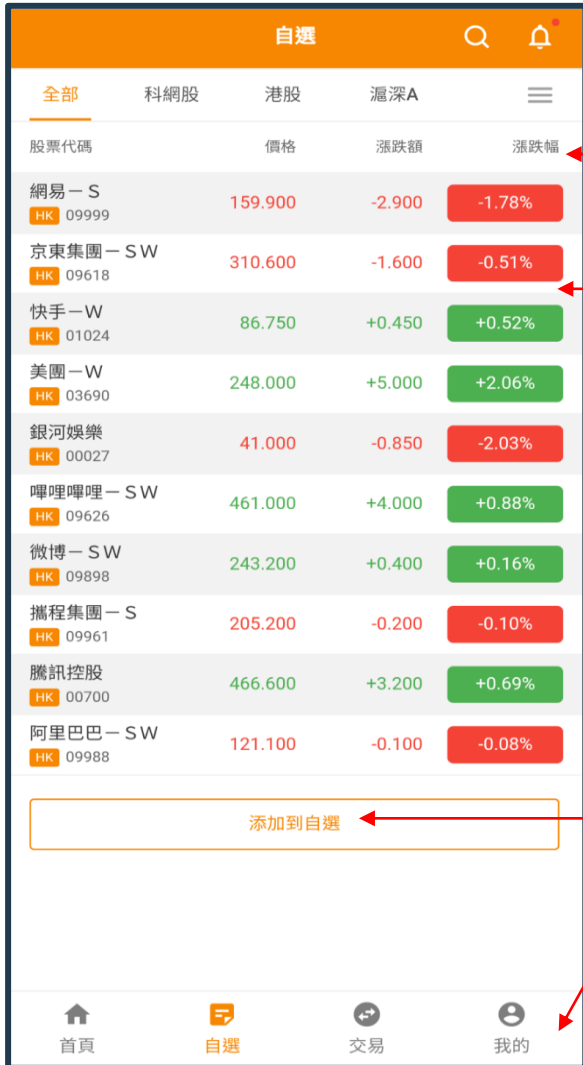




## 5. 自選股 Watchlists

### 5.1 總覽 Overview

用戶可添加喜好股票到默認或自行定義的新股票清單，並設定到價提示（只適用於串流報價計劃）。  
Users can add their favorite stocks to the default or self-defined watchlists, and set up price alerts (only for streaming quotation plan).



≡ 編輯分組鍵 Edit group key  
(參考5.2部分 refer to section 5.2)

股票分組：包括默認（全部、港股、滬深A、持倉）及自行定義清單，可左右掃動選取。  
Stock grouping: Including default (all, HK Stocks, CSI A, Holdings) and self-defined watchlists, which can be selected by swiping left and right.

個股報價區：視乎閣下的港股行情計劃，顯示實時 / 延時證券報價。點按以下欄目以按大小排列。  
Individual Stock Quote Area: Display real-time/delayed stock quotes depending on your HK Stock market plan. Click on the column below sort by size.

股票代碼	價格	漲跌額	漲跌幅
------	----	-----	-----

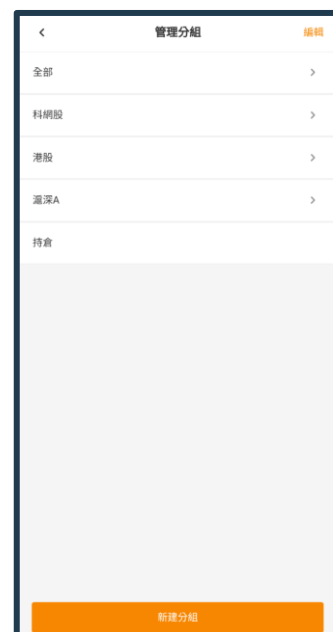
添加到自選按鈕 Add to the watchlists:  
按此搜索證券，並添加到自選 Click here to search for securities and add to the watchlists

四大主頁 Four main pages (總是顯示 Always shown):

- 首頁 回到此首頁 Home
- 自選 自選股票面 Watchlist
- 交易 落單頁面 Trade (第8部分 sections 8)
- 我的 帳戶資訊及設定 (第10部分) Account Information and Settings (Section 10)

### 5.2 分組管理 Group Management

在自選首頁按 ≡，進入管理以下分組頁面。  
Click on the homepage of your choice to enter the page of the following groups.







1. 按 <新建分組>，在彈出視窗輸入新分組名稱並按 <確定> 生效。  
Press <New Group>, enter the new group name in the pop-up window and press <OK> to take effect.



2. 按 <編輯> 進入清單管理介面  
Press <Edit> to enter the list management interface



-  按下把分組置頂  
Press to bring the group to the top
  -  按實並上 / 下拖曳以重新排序。完成後放手  
Press and drag up/down to reorder and done.
  -  把分組移除 (註: 默認分組不能移除)  
Remove Group (Note: Default cannot be removed)
  -  重新命名現有分組 (註: 默認分組不能重新命名)  
Rename Existing Group (Note: Default cannot be renamed)
- 按 <完成> 生效。Press <Finish> to effect.

### 5.3 添加到自選 Add to Optional

在自選首頁按 ，進入管理「搜索股票」頁面。  
Click on the homepage of your choice to enter, go to the Manage "Search Stocks" page.



搜索欄: 輸入證券編號中文 (繁簡均支持) / 英名全名或部分名稱後馬上顯示搜索結果。在底部按 <查看更多> 可觀看更多符合結果。非港股也可以用相同方式搜尋。

Search bar: The search result will be displayed immediately after entering the securities number in Chinese (both traditional and simplified versions are supported)/full name or part of the English name. Press <View More> at the bottom to view more matching results. Non-HK stocks can also be searched in the same way.


歷史搜索: 顯示過往搜索記錄，按下可再查看結果。按 <清除記錄> 可清空搜索歷史

Search History: show the past search records, press to view the results again. Press <Clear History> to clear the search history

證券搜索結果: 顯示符合證券名稱，編號及所屬市場。

Securities search results: Show the name, serial no and the market.

- 點選該券可跳轉到個股行情 Click the securities to individual stock quotes

- 按  添加自選到默認分組 (全部和所屬市場)，並彈出 <選擇所屬分組> 視窗。Press Add Preferences to the default (All and Market), and the <Select Group> window will pop up.

#### 選擇所屬分組 Select the Group

- 勾選現有分組或點選 <+ 新建分組> 以在彈出視窗建立和命名新分組。Check an existing group or click <+New Group> to create and name a new group in the pop-up window.

- 按 <確定>。Press <OK>.

#### 移除自選股票 Remove discretionary stocks

- 此程式多處個股資訊有已自選證券的  圖標。

Stock information in this program have icons of selected securities.

- 按  圖標會變回，自選證券移除成功。

Press the icon will change back, and the optional security has been removed successfully.



## 6. 個股行情 Stock Quotes

客戶服務熱線 Customer Hotline: +852 28538038  
電郵 E-mail Address: hkics@hkifsgroup.com

### 6.1 總覽 Overview

在首頁的港股20大排名、搜索股票、相關輪證等分頁，點選個股，即可跳轉到該證券的個股行情。視乎閣下的行情計劃，系統會顯示以下級別的港股行情資訊：

On the top 20 rankings of HK stocks on the home page, search stocks, and related rounds, click on a stock change to the stock price of securities. Depending on your market plan, the system will display the following levels of HK stock market information:

#### 延時點擊（默認計劃） Delayed click (default schedule)

○ 十五分鐘延時買賣最高一檔 15-minutes delay trading the highest tier

#### 實時串流 Real-time streaming

- Level 2 [買賣最高十檔及經紀輪候隊伍 Top 10 buy sell and brokerage queue]
- Level 1 [買賣最高一檔 The highest grade of buy sell]

#### 實時點擊（按次查詢服務） Real-time click (per-click query service)

- 1 [買賣最高一檔 The highest grade of buy sell]
- 2 [買賣最高十檔 Top 10 buy sell]
- 3 [買賣最高十檔及經紀輪候隊伍 Top 10 buy sell and brokerage queue]

### 個股報價區 Stock quotation area

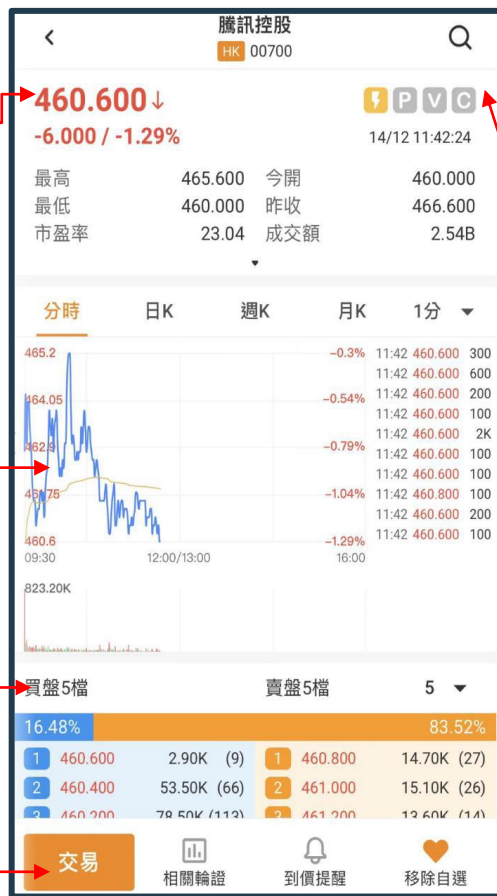
視乎用戶行情計劃，報價會顯示最後更新時間及是否15分鐘延時 Depend on the user quote plan, the quote will display the last update time and whether it delayed by 15 minutes

技術圖表區（請看 6.2 部分）  
Technical chart area (please see section 6.2)

輪候隊伍區（請看 6.3 部分）  
Queue area (see section 6.3)

快捷按鈕（如下）  
Shortcut button (below)

- 跳到落單頁面 Go to Order page
- 跳到相關輪證頁面（請看6.4部分）  
Go to Warrant page (see section 6.4)
- 設定到價提醒（請看第7部分）  
Set up price alert (see section 7)
- 添加或移除自選證券（請看第5部分）  
Add or remove optional securities (see Section 5)



### 實時串流報價 Real-time Streaming Quote



### 15分鐘延時報價 15-minutes Delay Quote



證券屬性：點選查看 圖標  
Securities Properties: Click icon to view information

證券屬性：點選查看 圖標  
Securities Properties: Click icon to view information

	停牌
	支持沽空
	支持開市前交易
	支持市場調節機制
	支持收市競價交易
	不在P/V/C時段

個股詳細報價區：在下部按上下箭咀 / 以展開 / 收回詳細報價。競價及冷靜期時段生效時才會顯示該區域報價。

Detailed quotation area for individual stocks: Press the up and down arrows in the lower part/to expand/retract the detailed quotation. Quotations in this area will only be displayed when the bidding and cooling-off period is in effect.

最高	465.600	今開	460.000
最低	460.000	昨收	466.600
市盈率	23.06	成交額	2.53B
52周最高	775.500	成交量	5.47M
52周最低	412.200	每手股數	100
參考平衡價	0.000	股息率	0.35%
參考平衡量	0	每股盈利	19.99
資產淨值	87.085		
<b>開市前時段</b>			
參考價	-	上限價	536.500
買賣盤差額	-	下限價	396.800
<b>AM 冷靜期</b>			
參考價	-		
上限價	-	冷靜期開始	-
下限價	-	冷靜期結束	-
<b>收市競價時段</b>			
參考價	-	上限價	-
買賣盤差額	-	下限價	-

## 6.2 技術圖表區 Technical Chart Area

技術分析圖及成交量圖：可選擇分時實線圖，日/月/周/即日K線陰陽燭圖。

Technical analysis chart and trading volume chart: Choose time-division line chart, day/month/week/day K-line candlestick chart.

分時實線圖  
Time-division  
Line Chart



日K陰陽燭圖  
Day K Line  
Candlestick Chart



周K陰陽燭圖  
Week K Line  
Candlestick Chart



月K陰陽燭圖  
Month K Line  
Candlestick Chart



即日K線圖可按下餐單選1分、5分或15分鐘圖。

For daily K-line chart, press the menu to select 1 min, 5 mins or 15 mins chart.



在圖表上按下，可顯示該點的對應交易日及價格。

Press on the chart to display the corresponding trading day and price for that point.



用兩指在圖表區左右掃，可以放大或縮小圖表。

Swipe left or right in the chart area with two fingers to zoom in or out of the chart.



## 6.3 輪候隊伍區 Queue Area

### 買賣隊伍 Buy and Sell Queue

(只適用於實時串流計劃使用者) 點按買賣盤隊伍檔數菜單可以選取觀看1、5或10檔價格深度

(Applicable for Real-time Streaming Quote User) Click on the order queue number menu to choose to watch 1, 5 or 10 price depths

買盤5檔		賣盤5檔		5
24.48%				1
1	460.800	4.70K (15)	1	461.000
2	460.600	10.50K (17)	2	461.200
3	460.400	57.60K (65)	3	461.400
4	460.200	81.80K (114)	4	461.600
5	460.000	240.20K (718)	5	461.800
				10
				3.90K (3)

買盤10檔		賣盤10檔		10
17.58%				82.42%
1	460.800	3.20K (13)	1	461.000
2	460.600	5.60K (14)	2	461.200
3	460.400	39.80K (62)	3	461.400
4	460.200	81.30K (112)	4	461.600
5	460.000	240.50K (718)	5	461.800
6	459.800	14.50K (35)	6	462.000
7	459.600	14.00K (18)	7	462.200
8	459.400	3.60K (14)	8	462.400
9	459.200	11.40K (23)	9	462.600
10	459.000	64.00K (151)	10	462.800

延時點擊（默認計劃）、Level 1實時串流或實時點擊按次查詢服務 1，只可顯示1檔價格深度。  
 Delayed click (default plan), Level 1 live streaming, or real-time click-per-view service 1, only 1 level of price depth can be displayed.



### 經紀輪候隊伍 Brokers Waiting Line

（只適用於實時串流計劃使用者）點按右上方經紀輪候隊伍檔數菜單可以選取觀看5、10或40個輪候隊伍。  
 (Applicable for Real-time Streaming Quote User) Click the broker queue number menu at the top right to choose to watch 5, 10 or 40 queues.

買盤經紀		賣盤經紀	
1 460.800	7.40K	1 461.000	
6448		6389	
6449		5467	
2847		5467	
9068		8036	
6431		6389	
3267		6387	
5998		8022	
5998		3284	
6432		7389	

## 6.4 相關輪證 Warrants

功能按鈕一覽 List of function buttons

股票代碼	價格	漲跌額	漲跌幅
騰訊愛銀四一購 A	0.000	0.000	+0.00%
騰訊法巴三十購 A	0.000	0.000	+0.00%
騰訊匯豐三九購 A	0.000	0.000	0.00%
騰訊海通三九購 A	0.138	-0.005	-3.50%
騰訊花旗三九購 A	0.131	-0.004	-2.96%
騰訊星展三九購 A	0.138	-0.006	-4.17%
騰訊摩通三九購 A	0.139	-0.004	-2.80%
騰訊瑞通三九購 A	0.129	-0.006	-4.44%
騰訊匯豐三九購 A	0.130	-0.002	-1.52%
騰訊高盛三九購 A	0.129	-0.005	-3.73%
騰訊瑞銀三九購 A	0.135	-0.003	-2.17%
騰訊瑞信三九購 A	0.137	-0.004	-2.84%
騰訊法興三九購 A	0.139	-0.006	-4.14%
騰訊愛銀三七沽 A	0.000	0.000	+0.00%
騰訊愛銀三七購 A	0.590	-0.040	-6.35%
騰訊海通三六沽 A	0.275	0.000	0.00%

◀ 回到上一頁 back to previous page

☰ 使用篩選。按後在彈出視窗（右圖）選取所需輪證類型及發行人篩選後按 **確認** 生效。

Use filter. After clicking, select the required type of warrants and issuer filter in the pop-up window (right picture), and then click to take effect.



點按可以按數值 / 升跌百分比排列（如右圖）。點按特定證券可以查看個股行情。

Tap to sort by value/percentage increase or decrease (right picture). Tap a specific security to view individual stock quotes

股票代碼	價格	漲跌額	漲跌幅
騰訊海通二四熊 C	0.054	+0.016	+42.11%
騰訊法興二七熊 E	0.049	+0.012	+32.43%
騰訊星展二一沽 A	0.026	+0.006	+30.00%
騰訊中銀二六熊 E	0.065	+0.013	+25.00%
騰訊國君二一沽 B	0.071	+0.014	+24.56%



## 6.5 滬深股通行情 Shanghai and Shenzhen Stock Connect

5.3部分的「搜索股票」功能亦支持搜索非港股。滬 / 深股通的個股行情效果如下，默認顯示1、5或10檔價格深度。下方功能快捷鍵只支持「交易」和「添加到自選」。

The "Search Stocks" function in Section 5.3 also supports searching for non-HK stocks. The individual stock market effect of Shanghai/Shenzhen Stock Connect is as follows, and the price depth of 1, 5 or 10 is displayed by default. The function shortcuts below only support "Trade" and "Add to Option".

白云机场 SH 600004					
最高	11.140	今開	11.050		
最低	10.820	昨收	11.050		
成交量	18.17M	成交額	198.95M		
買盤1檔		賣盤1檔			
1	11.100	25.57K	1	11.110	81.42K

## 7 到價提醒 (僅限於港股串流行情計劃使用者)

### Price Alert (Applicable of the HK Stocks Real-time Quote Plan)

在個股行情頁面底部點按  到價提醒，可跳轉到「到價提醒」頁面，顯示剛才選取的股票。  
Click at the bottom of the individual stock market page to the "Price Reminder" page to display the stock you just selected.



#### 設定提醒 Set reminder

點按 <添加提醒>，在設定頁面選取  
Click <Add Reminder> and choose from the settings page:

(1) 提醒類型 — 先在菜餐選取價格升 / 跌或日升 / 跌幅條件

Reminder type - First select the price increase/decrease or daily increase/decrease condition in the menu

(2) 再輸入對應提醒值 (股價或百分率)  
Enter the corresponding reminder value (stock price or percentage)

(3) 提醒頻率 — 選取「僅提醒一次」、「每天一次」及「持續提醒」模式。點按 <確定> 完成。

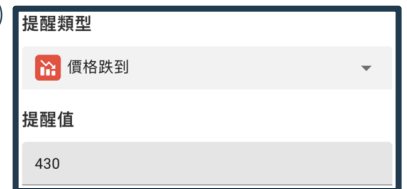
Reminder Frequency - Select "Reminder only once", "Once a day" and "Continuous reminder" mode. Tap <OK> to finish.

(4) 完成後返回「到價提醒」分頁，顯示已設定的提醒條件。

Return to the "Price Reminder" tab to display the set reminder conditions.

(5) 提醒效果：若股票到達提醒條件，系統會彈出通知，另外在「消息中心」也可以找尋記錄。

Reminder effect: If the stock reaches the reminder condition, the system will pop up a notification, and you can also find the record in the "Message Center".





## 7.1 刪除或停用提醒Delete or disable reminders

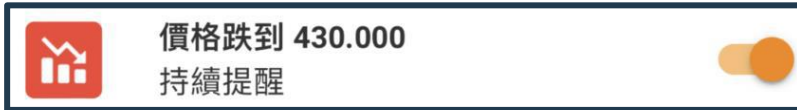
### 停用提醒 Disable reminders

(1) 在「到價提醒」頁面已設定好的項目點按  關閉提醒。

On the "Price Arrival Alert" page, click to close the alert.

(2) 此按鈕會變成灰色。此證券到價後將不會生成提醒通知


This button will turn gray. No alert notification will be generated when this security reaches the price



### 刪除提醒項目Delete reminder items (右圖Right)

(1) 請在「到價提醒」頁面點按 <到價設定>

Please click <Price Arrival Settings> on the "Price Reminder" page

(2) 在「到價設定」分頁勾選所需項目，或點按  全選 選取所有。

Check the desired items on the "Arrival Settings" tab, or click to select all.

(3) 按 <刪除> 完成。


Press <Delete> to finish.



## 8 落單 (一般訂單) Orders (General Orders)

### 8.1 港股交易 HK Stock Trading

進入港股交易頁面方法: Enter the Hong Kong stock trading page:

- (1) 在首頁按 Press on the home page 
- (2) 個股行情頁面按 或 Press or 
- (3) 我的交易頁面按 Trade page press 



**市場:** 顯示當前落盤市場

**Market:** Displays the currently placed market

**賬戶欄:** 有需要可按下選取現金 / 孖展或其他類型子賬戶

**Account column:** If necessary, click to select cash/margin or other types of sub-accounts

**購買力:** 實時可用落單資金, 會自動換算成交易貨幣

**Buying power:** real-time available funds for placing orders, which will be automatically converted into transaction currency


**訂單類型:** 港股支持增強限價盤、限價盤、競價盤、競價限價盤、市價盤, 點按菜單選取 (註: 因應券商設定, 部分盤類或會停用)

**Order type:** HK stocks support enhanced limit order, limit order, price order, auction limit order, market order, click the menu to select (Note: Depending on the broker's settings, some types of orders may be disabled)

**股票:** 按下可搜索證券 (參考5.2部分) ; 填上後可顯示該證券價格。


**Stocks:** Press to search for securities (refer to Section 5.2); fill in to display the price of that security.

 顯示「持倉股票」及「今日訂單」子頁面。按持倉可把證券編號填到股票欄。今日訂單請參考9.3部分。The "Positions" and "Today's Orders" sub-pages are displayed. According to the position, the security number can be filled in the stock column. Please refer to section 9.3 for today's order.

 **價格:** 點按可彈出右方菜單, 以市價 / 最高買盤價 / 最低賣盤價填上訂單價格。按 <+> 或 <-> 逐口價調節訂單價格。


**Price:** Click to pop up the right menu, fill in the order price with market price/highest bid price/lowest ask price. Adjust the order price by <+> or <-> on a per-buy price basis.

數量			
最大可買	1,975,000	持倉可賣	5,000
買入 1/2	987,000	沽出 1/2	2,000
買入 1/3	658,000	沽出 1/3	1,000
買入 1/4	493,000	沽出 1/4	1,000

**數量:** 點按  可彈出右方菜單, 以捷徑方式填上訂單數量。按 <+> 或 <-> 逐手數調節訂單數量。輸入數量和價格可顯示訂單

**Quantity:** Tap to pop up the right menu, and fill in the order quantity as a shortcut. Press <+> or <-> to adjust the order quantity by lot. Enter quantity and price to display order

股票	00027.HK	
銀河娛樂	39.600	-1.400 -3.41%
<b>持倉股票</b>		<b>今日訂單</b>
持倉股票	市值/數量	價格/成本 持倉盈虧
銀河娛樂 00027.HK	198,000.00 5,000	39.60 -



### 期限：設定訂單到期日

**Deadline:** Set the order expiration date

點按鈕，再點日期可彈出日曆小視窗，點選所需到期日（只有黑色日期才可選）。按 <關閉> 可退出。

Click the button, and then click the date to pop up a small calendar window, click the desired due date (only black dates can be selected). Press <Close> to exit.

- 若不設定，訂單默認只當天有效。  
If not set, the order is only valid on the day by default.

- 訂單一直貯存於系統直到到期或全部成交  
Orders are stored in the system until they expire or are fully filled

- 到期日訂單不可更改，只可取消。  
Due date orders cannot be changed, only cancelled.



**買入 / 沽出按鈕:** 按鈕上方有最大可買股數及持倉可賣股數供參考。按下即可彈出訂單確認小視窗

**Buy/Sell button:** Above the button, there are the maximum number of shares that can be bought and the number of shares that can be sold in a position for reference. Press to pop up the small order confirmation window

點按 <確認> 傳送訂單，或 <取消> 返回。

Click <Confirm> to send the order, or <Cancel> to return.

## 9 「我的交易」 頁面 [My Trade] Page

### 9.1 總覽 Overview

在主菜單選取  即可前往，操作各種交易功能，包括：多市場持倉管理、落盤、查看訂單記錄：  
 Select from the main menu to go to and operate various trading functions, including: multi-market position management, placing orders, viewing order records:

**市場分頁：** 點按不同市場，下方操作區可顯示對應市場的資產、訂單資料及可操作功能。

**Market tab:** Click on different markets, the lower operation area can display the assets, order information and operable functions of the corresponding market.

**滾動信息：** 不間斷顯示重要信息，按 X 略過。

**Scrolling information:** Display information without interruption, press X to skip.

**賬戶欄：** 有需要可按下選取現金 / 孖展或其他類型子賬戶

**Account column:** If necessary, click to select cash/margin or other types of sub-accounts

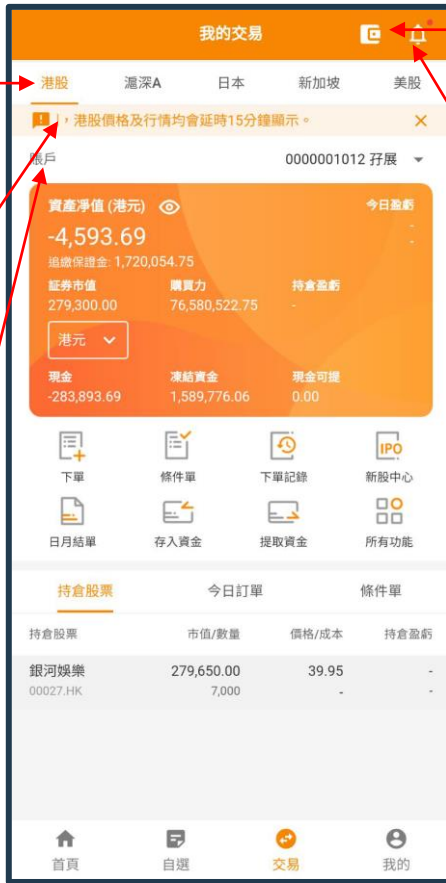
**資產淨值卡：** 實時顯示每個市場的資產淨值。(美元資產淨值效果如下圖)

**Equity Card:** Displays the equity of each market in real time. (The effect of US dollar net asset value is as follows)



按  /  圖標可以隱藏 / 顯示實際數字 (隱藏效果如下圖)

Press the icon to hide/display the actual number (the hidden effect is as shown below)



**賬戶概覽：** 點按  前往，查看跨市場資產 / 貨持倉  
**Account Overview:** Click to go to view cross-market money/ positions

**系統訊息：** 按入  以查看各種系統通知；新通知圖標右上方將現紅點。

**System messages :** Press to view various system notifications; a red dot will appear in the upper right of the new notification icon.


**賬戶欄：** 有需要可按下選取現金 / 孖展或其他類型子賬戶

**Account column:** If necessary, click to select cash/margin or other types of sub-accounts

**資產淨值 Net Asset Value:**

• 按下  /  圖標可以隱藏 / 顯示實際數字

Press the / icon to hide/show the actual numbers

•  按下列單選擇不同貨幣，可看到資產的對應貨幣值。Press the menu to select a different currency to see the corresponding currency value of the asset.

### 賬戶概覽 Account Overview



## 9.2 持倉股票 Position

顯示用戶該市場持倉量、市值、現價、成本價及盈虧額 / 盈虧率數值。

Displays the user's position, market value, current price, cost price, and profit/loss/profit/loss ratio value in this market.

• 點按該證券可跳轉到「個股行情」頁面。（參考第6部分）

Click on the security to the "Stock Quotes" page. (Refer to Section 6)

• 非港股持倉，部分功能不適用。

For non-HK stock positions, some functions are not applicable.

持倉股票	今日訂單	條件單	
持倉股票	市值/數量	價格/成本	持倉盈虧
新鴻基地產 00016.HK	47,025.00 500	94.05 0.00	+0.00 +0.00%

持倉股票	今日訂單	條件單	
持倉股票	市值/數量	價格/成本	持倉盈虧
AGILENT ... A.US	4,330.20 105	41.24 0.00	+0.00 +0.00%
APPLE INC AAPL.US	3,426.48 36	95.18 0.00	+0.00 +0.00%

## 9.3 「今日訂單」指令簿 [Today's Order] Order Book

顯示用戶今天訂單，及其實時狀態。點按訂單，下方彈出功能菜單如右圖：

Display the user's order today, and its real-time status. Click the order, and the function menu will pop up as shown on the right:

 1. 跳轉到該股票個股行情（參考第6部分）

To this stock ticker (refer to section 6)

 2. 彈出「交易取消」確認視窗。

A confirmation window of "Transaction Cancellation" will pop up.

按 <是> 完成，按 <否> 返回。

Press <Yes> to finish, press <No> to return.

**交易取消**

確認撤銷這條訂單嗎？

否
是

持倉股票	今日訂單	條件單	
名稱/方向	價格	數量/已成	時間/狀態
第一拖拉機股份 買入 00038.HK	4.05	14,000 7,000	16/12 14:03 部份成交

 3. 前往「修改訂單」頁面。輸入所需價格及 / 或數量，按 <買入> 或 <賣出>，再完成確認。操作方法跟普通落單相似，請參考8部分。

Go to the Modify Order page. Enter the desired price and/or quantity, press <Buy> or <Sell>, and then complete the confirmation. The operation method is similar to the ordinary order, please refer to section 8.


註Note:

• 訂單只可以修改數量或 / 及價格。

Orders can only be modified for quantity and/or price.

• 有限期的訂單不支持改單。點按將不會顯示改單功能。

Changes to orders with a limited period are not supported. Clicking will not display the Change Order feature.

 4. 將整條訂單複製，跳轉到落單頁面，自動填上價格，數量等資料，亦可在遞交前更改價格和數量。操作方法跟普通落單相似，請參考8部分。

Copy the entire order, jump to the order page, and automatically fill in the price, quantity and other information, and you can also change the price and quantity before submitting. The operation method is similar to the ordinary order, please refer to section 8.

**修改訂單**

賬戶: 0000001012 孖展

購買力: 78,113,537.27 港元

類型: 增強限價盤

股票: 00038.HK

第一拖拉機股份 4.130 +0.120 +2.99%(延時15分)

價格:  + - 🎯

數量:  + - 📄

金額: 57,120.00

最大可買: 6,000,000 持倉可賣: 14,000

買入



5. 前往「訂單詳情」頁面，顯示訂單各項實時細節，包括訂單狀態，成交明細。可使用底部的<改單>、<撤單>及<行情>功能。操作方法跟普通落單相似，請參考8部分。  
Go to the "Order Details" page to display the real-time details of the order, including order status and transaction details. You can use the functions of <Change Order>, <Order Cancel> and <Quote> at the bottom. The operation method is similar to the ordinary order, please refer to Section 8.

訂單詳情		
買入		部份成交
第一拖拉機股份 00038.HK		
訂單號	00393654	
類型	增強限價盤	
數量	14,000	
價格	4.05	
下單時間	16/12/2021 14:03:33	
成交時間	成交數量	成交價格
16/12/2021 14:03:33	7,000	4.05

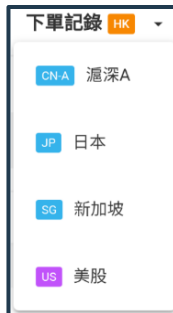
## 9.4 下單記錄 Order Record

「下單記錄」市場清單 點按顯示可交易市場菜單，點選所需市場。

**[Order History] market list** Tap to display the tradable market menu, and tap the desired market.

**賬戶欄：**有需要可按下選取現金 / 孖展或其他類型子賬戶。

**Account column:** Click to select cash/margin or other types of sub-accounts if necessary.

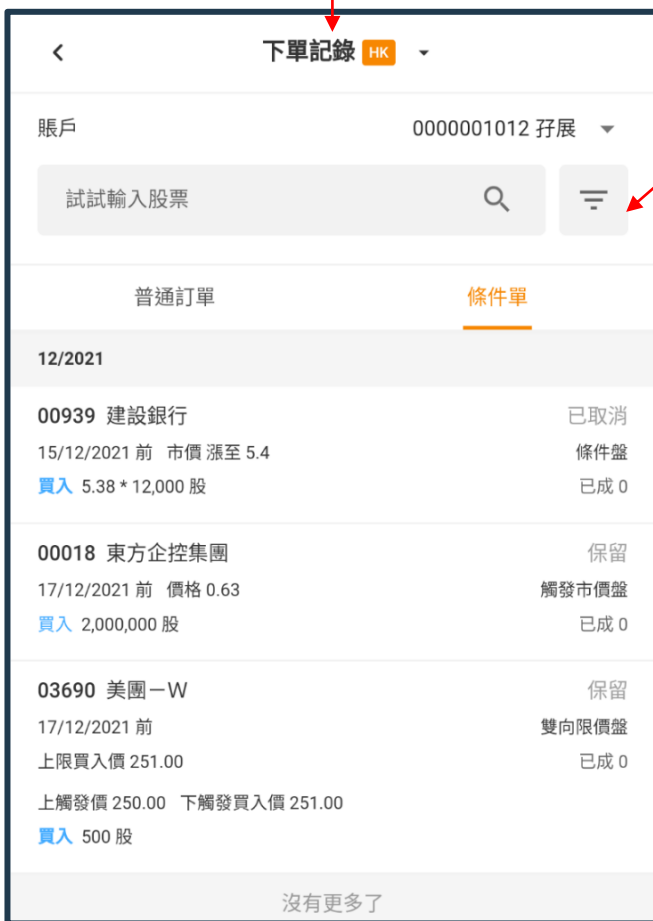


**股票搜索欄：**按下可搜索證券（參考5.2部分）。填上後即可顯示該證券的落盤記錄。

**Stock search bar:** Press to search for securities (refer to Section 5.2). After filling in, the order record of the security will be displayed.

篩選按鈕，點選會彈出小視窗，選取日期範圍、買 / 沽、狀態等篩選條件。按<確認>顯示已篩選結果，或按<重設>再次選取篩選條件。

Filter button, click it and a small window will pop up, select filter conditions such as date range, buy/sell, status, etc. Press <OK> to display the filtered results, or press <Reset> to reselect the filter criteria.



**訂單分頁：**點選可查看普通訂單記錄或條件單記錄。  
**Order Paging:** Click to view ordinary order records or conditional order records.

**訂單顯示區：**顯示訂單。點按訂單，下方彈出功能菜單，操作方法請參考第9.3部分。

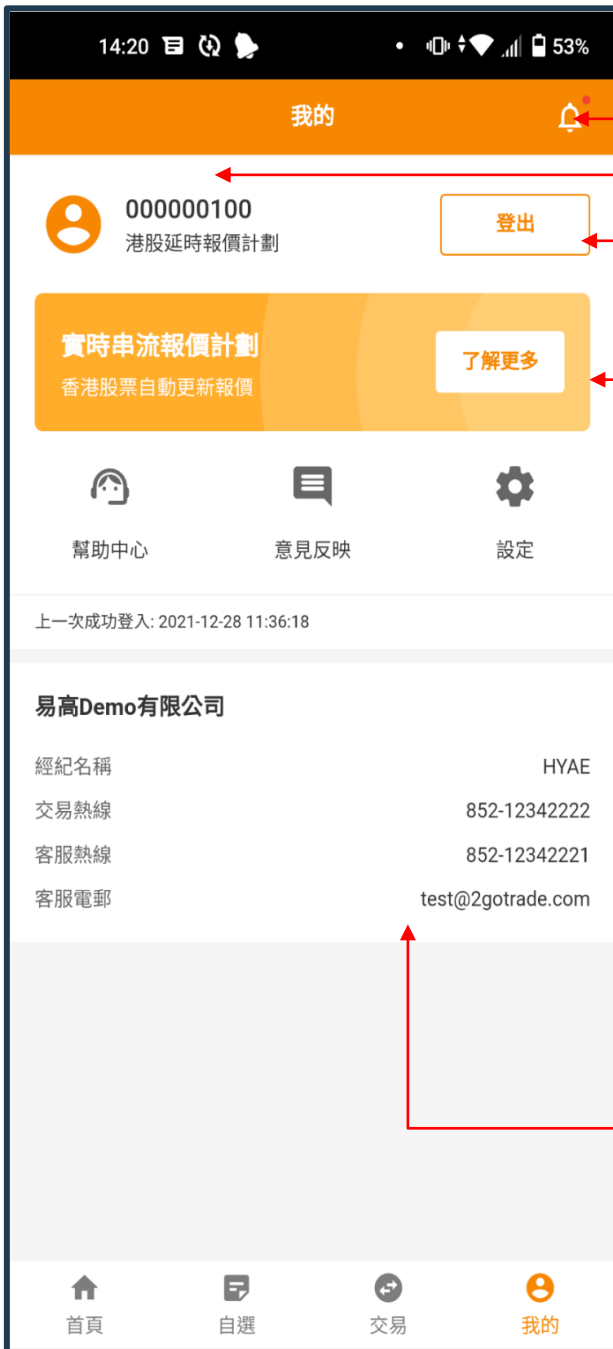
**Order display area:** Display orders. Click the order, the function menu will pop up below, please refer to Section 9.3 for the operation method.



## 10 我的 ME

「我的」分頁可支持用戶管理個人賬戶各項設定，及各種客戶服務功能。詳情請看下列各大部分。  
The "ME" tab can support users to manage various settings of their personal accounts and various customer service functions. Please see the following sections for details.

### 10.1 總覽 Overview



系統訊息(請看10.3 部分)

System messages (please see section 10.3)

賬戶編號及港股行情計劃名稱

Account No. and Name of HK Stock Quote Plan

「登出」按鍵 - 點按可以從流動裝置登出賬戶。  
[Logout] Button - Tap to log out of account from mobile device.

報價計劃升級廣告 Quote Plan Upgrade Ads

點按「了解更多」查看，詳情如下圖。可再點按「聯絡客服了解更多」以致電本公司客戶服務熱線。  
Click "Learn More" to view the details as shown below. Click "Contact Customer Service to Learn More" to call our Customer Service Hotline.



本公司資料 - 顯示用戶所屬經紀及本公司聯絡方法。  
Our Information - Displays the user's brokerage and our company contact information.

## 10.2 幫助中心 Help Centre

點按「我的」頁面上，或其他介面的  圖標後可到右頁。

Click the icon on the "ME" page, or other interface to go to the right page.

### 常見問題 FAQ

- 點按「常見問題FAQ」去到常見問題頁面，問題可分為帳戶、交易、資金及新股四大類（下圖）。

Click "FAQ" to go to the Frequently Asked Questions page. The questions can be divided into four categories: account, transaction, funds and IPO (below).



- 點選問題可顯示答案。

Tap a question to reveal the answer.

- 點按問題右上方的  縮回。

Tap Retract at the top right of the question.



### 電話查詢 Phone Enquiry

點按「立即致電」彈出本公司客服熱線電話。點按號碼可跳轉到打電話頁面。

Click "Call Now" to pop up our customer service hotline. Tap the number to jump to the calling page.



## 意見反映 Feedback

(1) 點按「意見反映」可跳轉到右圖，撰寫意見給本公司  
Click "Feedback" to the right picture and write an opinion to us

(2) 在信息欄輸入意見信息。

Input opinion information in the information column.

(3) 如有需要上傳圖片，點按上傳圖片的 **+**

If you need to upload a picture, click the

- 點選使用相機或圖片庫搜尋圖片

Click to search for pictures using camera or photo library



- 使用相機拍照，或在圖片庫找尋所需圖片。

Take a photo with the camera, or find the image in the photo gallery.

- 在下方可預覽已上傳圖片。

Preview the uploaded image below.

- 重覆上述步驟，可上傳多張圖片。

Repeat the above steps to upload multiple pictures.

(4) 意見類別 Types of comments:

- 請點選 <客戶服務> 或 <技術支援>

Please click <Customer Service> or <Technical Support>

(5) 回覆方法 Reply method :

- 如需本公司回覆，請點按回覆方式（手機或電郵），並輸入聯絡資料。

If you need a reply from us, please click the reply method (mobile phone or email) and enter the contact information.

(6) 按 <提交> 完成。

Press <Submit> to complete.

## 10.3 設定 Setting

點按「我的」頁面上，或其他介面的圖標後可到右頁。點按以下功能作相關設定  
Click the icon on the "ME" page, or other interface to go to the right page. Click the following functions to make related settings



### 賬戶資訊 Account Information

- 點按可查看賬戶資訊及券商條款。  
Tap to view account information and the terms.



### 安全設定 Security settings

- 點按可在下頁修改登入密碼及管理設備（請看10.3.1至10.3.4部分）  
Tap to modify the login password and manage the device on the next page (See sections 10.3.1 to 10.3.4)



### 10.3.1 密碼設定 Password Setting



點按 <修改登錄密碼>

Tap <Change Login Password>

- 在修改頁面先輸入現時密碼，再輸入兩次新密碼。  
On the modification page, first enter the current password, and then enter the new password twice.
- 系統會檢查密碼強度。系統不容許強度過低的密碼。  
The system checks the password strength. The system does not allow passwords that are too weak.



顯示輸入資料 Display input data

清空該欄輸入資料 Clear this field to enter data

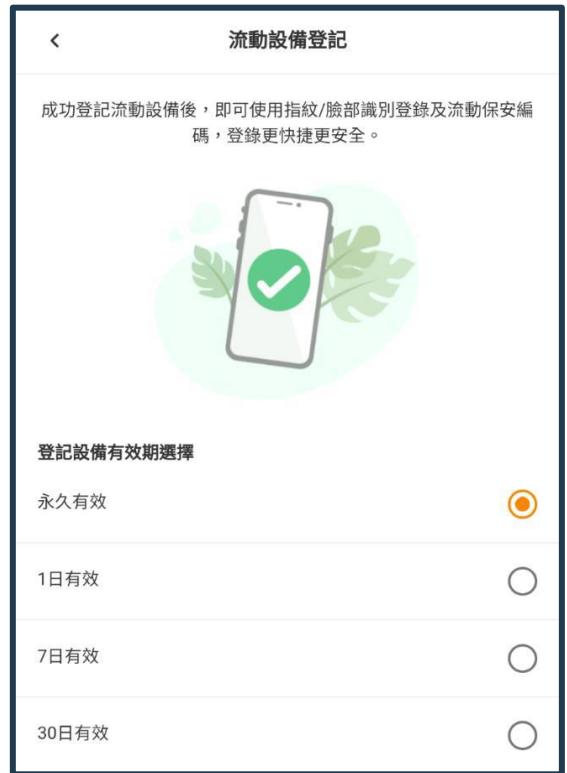
- 點按 <確定> 完成修改。  
Click <OK> to finish editing.

## 10.3.2 流動設備登記 Mobile Device Registration

此功能亦可提高用戶登入的安全性。  
This function also improves user login security.

- 點按 <流動設備登記>  
Tap <Mobile Device Registration>
- 在登記頁面選取登記有效期（如右圖）。  
Select the registration validity period on the registration page (as shown on the right).
- 點按 <確定> 完成操作中的設備登記。  
Click <OK> to complete the device registration in action.
- 安全設定頁面的「流動設備登記」的按鈕顯示啟動，並顯示新功能「指紋（面容）登錄」及「設備管理」（如下圖）

The button display of "Mobile Device Registration" on the security setting page is activated, and the new functions "Fingerprint (Face) Login" and "Device Management" are displayed (as shown below)



## 10.3.3 生物認證 Biometric authentication

系統可偵測流動設備支援的生物認證方式（指紋或面容識別）並顯示相應登錄方式。

The system can detect the biometric authentication methods (fingerprint or facial recognition) supported by the mobile device and display the corresponding login method.

兩者操作方式相同，此處以指紋作示範。

Both operate in the same way, and here we use fingerprints as an example.

- 點按 <指紋登錄> Tap <Fingerprint Login>
- 彈出「指紋認證」視窗，請用已在流動設備認證的指頭觸控指紋感應處，直至顯示「指紋認證成功」。  
The "Fingerprint Authentication" window will pop up. Please touch the fingerprint sensor with the finger that has been authenticated on the mobile device until "Fingerprint Authentication Successful" is displayed.
- 如有需要，點按「取消」退出。  
If necessary, tap **Cancel** to exit.
- 完成後安全設定頁面的「指紋登錄」按鈕顯示啟動。  
After completion, the "Fingerprint Login" button on the security setting page will be displayed and activated.

### 指紋認證

驗證指紋後繼續



指紋識別成功

取消

### 10.3.4 設備管理 Device Management

系統支持賬戶可在最多五台流動設備登入。設備過多時（如：更換新手機）需要註銷若干已認證設備。

The system support account can be logged in on up to five mobile devices. When there are too many devices (such as replacing a new mobile phone), several certified devices need to be cancelled.

- 點按 <設備管理>

Tap <Device Management>

- 在下一頁顯示該賬戶現時已登記一台或多台流動設備資料。

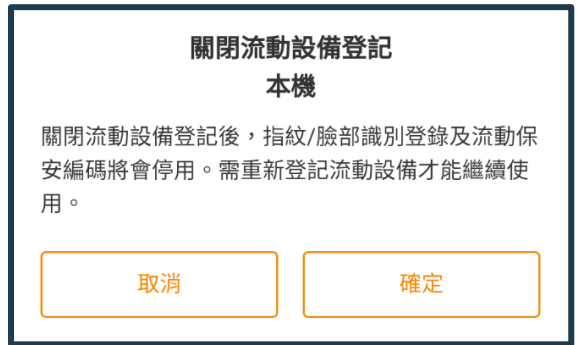
The next page shows that the account is currently registered with one or more mobile devices.

- 在需要移除的設備點按 <註銷>

Tap <Logout> on the device to be removed

- 在彈出視窗點按 <確定> 完成註銷，或 <取消> 退出。

Click <OK> in the pop-up window to complete the logout, or <Cancel> to exit.



### 10.4 推送通知設定 Push Notification Settings

在「設定」頁面點按  
On the [Settings] page, tap



- 點按不同系統消息推送的按鈕，可開啓（橙色按鈕）或停止（灰色按鈕）該類通知

Click the button for different system notifications to enable (orange button) or stop (gray button) such notifications

- 到價提醒設定（參考7部分）

Price Reminder Setting (refer to Section 7)

### 10.5 偏好設定 Preferences Setting

介面個人喜好設定，點按以在彈出菜單選擇，或啓動 / 停止功能。

Interface preferences, tap to select from the pop-up menu, or start/stop the function.



- 更換皮膚：整體介面可選取純白或暗黑風格

**Change the skin:** the overall interface can choose pure white or dark style

- 語言設置：支持繁體中文、簡體中文或英文。默認語言為流動裝置使用語言。

**Language setting:** Support Traditional Chinese, Simplified Chinese or English. The default language is the language used by the mobile device.

- 屏幕常亮：啓動後，使用交易易時屏幕常亮

**Screen is always on:** After startup, the screen is always on when using transactions

- 表格間隔條紋顯示：啓動後，介面顯示多列資訊時有間隔條紋效果。

**Display of spaced stripes in the table:** After activation, the interface will display spaced stripes when multiple columns of information are displayed.

- 行情設定 | 漲跌顏色：可選「綠漲紅跌」或「綠跌紅漲」

**Quote Setting | Rising or Falling Color:** You can choose "Green Up Red Down" or "Green Down Red Up"

— 完 END —